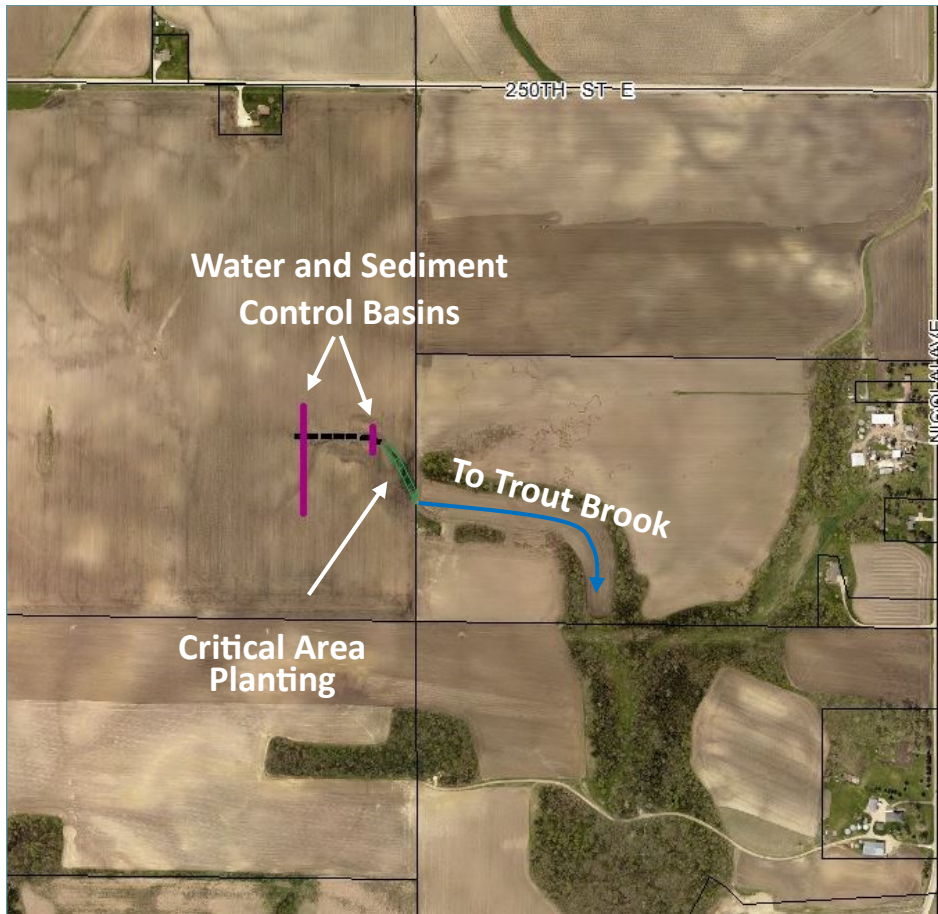


ROGER PEINE

WATER & SEDIMENT CONTROL BASINS & CRITICAL AREA PLANTING



PRACTICE:

- Water and Sediment Control Basins (2)
- Critical Area Planting

BENEFITS:

- 100 tons of soil per year prevented from traveling downstream
- 15 lbs. of phosphorous per year prevented from traveling downstream

PARTNERS:

- Cannon River Watershed Partnership
- North Cannon River Watershed Management Organization
- Minnesota Board of Water and Soil Resources

WATERSHED:

- Cannon River

RECEIVING WATERS:

- Trout Brook

INSTALLATION:

- Fall 2018

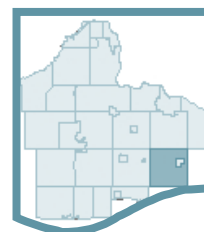
PROJECT: Two water and sediment control basins and a 300-foot by 30-foot critical area planting were installed to address field erosion. The project will reduce erosion in the field and reduce sediment transport to Trout Brook.

FUNDING:	Project Cost:	\$20,362
	Cost Share Amount:	\$15,272
	Landowner Amount	\$5,090



Clean Water Fund:
 Protecting and restoring
 Minnesota's waters for
 generations to come.

LOCATION:
 Douglas Township
 Section 23





Aerial photo from before the project installation shows the gully through the field. Two basins and a critical area planting were designed to reduce erosion in the field and reduce sediment transport downstream.



Underground tiles with surface inlets were installed to slowly discharge surface water runoff to a stable outlet.



Embankments were constructed for each basin to store the runoff while it is slowly released through the outlet and underground tiles.